

CONTENTS



Humber Bridge contract: Page 2



Training & safety: Pages 4 & 5



Wakefield depot move: Page 6



New Sheet Stand: Page 7

BOOM LIFTS HELP TO MAKE IT BLACK AND WHITE AT PRIDE PARK

These AFI boom lifts have helped a painting and decorating company to put some extra pride into Pride Park, the home of Derby County Football Club, by painting parts of the stadium in the club colours of black and white.

Whittle Painting Nottingham Ltd hired the three AFI machines to reach the high level galvanised steelwork around the stadium so they could paint it in dark grey above the roof level and in black and white below that area. AFI supplied two Haulotte articulating booms and a Genie stick boom.



AFI-UPLIFT ARE WELL PLACED TO FACE THE CHALLENGES AHEAD

Despite the challenging economic conditions, AFI-Uplift is benefiting from having a very strong financial base, enabling it to continue moving forward to ensure that it provides the best possible services and products to its customers.

For example, we are offering new sheet stand and pipe stand options for a number of our scissor lift ranges (Page 7). These products will provide real benefits to our roofing, cladding and building services customers because they offer a much safer and faster method of handling materials.

In a move which further emphasises our commitment to health and

safety, AFI has joined the British Safety Council and we have also strengthened our own Safety Committee (Page 5).

We have also made further investment in our depot network to ensure that we continue to meet the needs of our customers.

For example we recently relocated our Wakefield depot to new and much larger purpose-built premises (Page 6).

Another key element of our commitment to customers is training. We have made further significant investments in this area, which is resulting in an increased demand for our courses, in particular the MEWPs for Managers course (Page 4). This course ensures that managers are

fully aware of their responsibilities in relation to powered access equipment.

We are fully embracing Information Technology and are delighted to report that our new, state-of-the-art digital pen system is now in the final stages of its roll out throughout our depot network.

The system enables details on forms such as Pre Delivery Inspections, LOLERs and test certificates to be directly uploaded onto our IT system as soon as a form has been completed (Page 6).

2009 will certainly be a very challenging year – but by working in close partnership with our customers we will both be in a stronger position to weather the economic conditions.

AFI-UPLIFT

ON SITE FOR NEW SCHOOL PROJECT

The electric scissor lift (pictured below) from AFI's Scotland depot was one of five to be hired by contractors working on the construction of a new secondary school at Milngavie, Glasgow.

SPIE Matthew Hall used three 19ft JLG scissor lifts, and 32ft Skyjack and JLG machines to install pipework, ventilation systems, high level trunking and lighting at Douglas Academy, which is due to open in summer 2009. Non-marking tyres and emission-free operation were features of all the scissor lifts. AFI also supplied two Pop-Up machines for lower level access work.

Douglas Academy is one of six new secondary schools in East Dunbartonshire being built in a £134 million public private partnership scheme. SPIE Matthew Hall and Morgan Ashurst are the construction joint venture partners for the project.

The new school will have all-purpose indoor games halls and outdoor sports pitches, bigger canteens, more spacious corridors, and a wide range of social rooms for pupils, together with community halls with easy access for public events.



INSPECTING THE HUMBER BRIDGE

All terrain capabilities were a key requirement when the operators of the world-famous Humber Bridge hired an AFI boom lift to carry out concrete inspection and repair work on the bridge.

A H23TPX boom from AFI's Hull depot met all the requirements. With four wheel drive and all terrain tyres, it was ideal for traversing the soft, uneven ground at the side of the bridge.

The boom lift was hired by Humber Bridge Board maintenance personnel, who every two years carry out a programme of general inspection and maintenance work on the concrete anchorages and viaducts on both the North and South banks of the River Humber.

Ian Allenby, Humber Bridge Structural Maintenance Inspector, said: "The 70ft working height of the boom gave us easy access for our inspection and maintenance work. We do have our own truck mounted access unit, but it couldn't give us enough height for the work required. The AFI boom lift not only had the reach we needed but was also able to cope with the uneven and soft conditions underfoot."

MACHINES IN ACTION



AFI SIGNED UP AT ST MIRREN FC!

Two boom lifts and two scissor lifts from our Scotland depot were used to help get St Mirren Football Club's new stadium ready for its recent opening.

St Mirren have moved from their former Love Street Stadium in Paisley to a new 8,000 capacity stadium at Greenhill Road. The main contractors were Barr Construction, who are leading providers of sports stadia facilities.

The 60ft Genie and 66ft JLG straight booms and 50ft Skyjack scissor lifts helped contractors to carry out a wide range of electrical installation work around the stadium.



RISING FROM THE ASHES

Six AFI boom lifts were hired by contractors erecting the steelwork for a new cold store and warehouse for East Midlands based Abbey Produce after the company's previous warehouse was devastated by fire a year ago.

Beam Structural Services supplied and erected the steelwork at Abbey Produce's headquarters at Whittlesey, near Peterborough. The new cold store and adjacent warehouse are both due to open in Spring 2009.

Supplied by AFI's Peterborough depot, the six diesel machines were the JLG 460SJ, Genie GS40 and Haulotte H16TPX telescopic booms, together with a Genie Z45/25 articulated boom.

Beam Structural Services were able to speed up the steelwork element of the project by pre-painting off-site all 285 tons of structural steel used. The main contractors are Lindum Sturgeon.

Richard Melton, Construction Director, said: "This project rounded off a very good year for Beam Structural Services and we are equally optimistic about 2009. We are looking forward to working closely with AFI during the coming year."

AFI-UPLIFT TRAINING UPDATE...AFI-U

INCREASED DEMAND FOR AFI TRAINING COURSES

AFI is experiencing increased demand for its training courses as a result of the growing awareness of health and safety legislation, combined with the range and variety of courses being offered.

One course which is particularly growing in popularity is MEWPs for Managers. AFI recently ran a number of the one day courses on site for contractors working on the 'Media City UK' project at Salford Quays, Manchester.

The course creates awareness of managers' responsibilities and requirements for planning and selection of MEWPs at work.

At Media City, AFI General Training Manager Brian Parker took delegates through their understanding of the regulations and laws applicable for managing MEWPs on site.

As part of the course he asked delegates to carry out a machine selection and risk assessment for a specific task. After being given a detailed explanation of what the requirements were, they



then carried out another machine selection and risk assessment. It was pleasing to note how much additional information was provided on the second exercise! The course finished with a written test and feedback.

As just one example of the wide scope and range of AFI's courses, we also run a half-day abrasive wheels course, which is designed for all those operating or required to change abrasive wheels.

The course includes types 1, 27, 41 and 42 abrasive wheels, as well as the safe use of hand bench saws, angle grinders and disc cutters.



The course covers the Health & Safety at Work Act 1974 and the Provision and Use of Work Equipment Regulations 1998.

There is also theory and practical training on hazards and precautions, identification of abrasive wheels, storage, handling and transportation, functions of components, assembly and balancing, methods of safe use, and personal protective equipment (PPE).

The AFI abrasive wheels course can be carried out on site, subject to site conditions, or at an AFI depot.

PROVIDING COVERAGE THROUGHOUT THE UK

Birmingham

Tel: 0121 525 7226

Fax: 0121 525 5547

birmingham.depot@afi-uplift.co.uk

East Midlands

Tel: 0115 975 3064

Fax: 0115 975 5387

eastmidlands.depot@afi-uplift.co.uk

Hull

Tel: 01482 341 799

Fax: 01482 345 099

hull.depot@afi-uplift.co.uk

Liverpool

Tel: 0151 545 2190

Fax: 0151 545 2199

liverpool.depot@afi-uplift.co.uk

London East

Tel: 01277 812 976

Fax: 01277 814 568

londoneast.depot@afi-uplift.co.uk

London South

Tel: 01732 781 034

Fax: 01732 887 425

londonsouth.depot@afi-uplift.co.uk

London West

Tel: 01753 783 744

Fax: 01753 650 808

londonwest.depot@afi-uplift.co.uk

Manchester

Tel: 0161 707 7895

Fax: 0161 707 7896

manchester.depot@afi-uplift.co.uk

Milton Keynes

Tel: 01908 670 237

Fax: 01908 669 408

miltonkeynes.depot@afi-uplift.co.uk

North East

Tel: 0191 419 0757

Fax: 0191 416 5513

northeast.depot@afi-uplift.co.uk

LIFT TRAINING UPDATE ...

4 FOR 3 ON IPAF TRAINING COURSES

Send four delegates on an IPAF Operator training course, and pay for just three!

Book now – places are limited!

Courses available at our training centres across the UK, on site or at your premises.*

Total cost for four delegates is £650. Offer available until 30 April 2009.

To book, call AFI Training on 08707 871511

*providing the facilities are suitable

NEW INITIATIVES ON SAFETY FROM AFI

AFI-Uplift has launched two initiatives in a move which further highlights our commitment to health and safety – we have joined the British Safety Council and have also strengthened our own Safety Committee.

The British Safety Council is one of the world's leading workplace health, safety and environmental organisations, with up to 10,000 members and subscribers in more than 50 countries.

The Council provides up-to-date and accurate information and guidance on health, safety and environmental issues. Membership services help organisations to manage risk, increase productivity and improve reputation.

AFI's membership of the British Safety Council further demonstrates to our customers that they can put their trust in a company which is very proactive on Health & Safety issues.

BSC membership also enables AFI to become a registered training centre for the BSC Level 1 Certificate in Health & Safety at Work.

AFI Safety Committee

We have strengthened the AFI Safety Committee by adding new senior members and widening the



committee's scope to look at industry issues as well as internal ones. We are looking closely at the types of accidents occurring in the industry, what is causing them to happen, and how they can be avoided.

Members of the Safety Committee are Brian Parker, who has day-to-day responsibility for Health & Safety within the company, AFI Directors Austin Baker, Geoff Gibson and Nick Higgins, and Clare Rochford (AFI internal auditor).



BRITISH SAFETY COUNCIL

Peterborough

Tel: 01733 206 638

Fax: 01733 205 791

peterborough.depot@afi-uplift.co.uk

Preston

Tel: 01772 709 731

Fax: 01772 759 488

preston.depot@afi-uplift.co.uk

Scotland

Tel: 01698 844 655

Fax: 01698 748 036

scotland.depot@afi-uplift.co.uk

South Wales

Tel: 01656 767 456

Fax: 01656 657 361

southwales.depot@afi-uplift.co.uk

South West

Tel: 01278 446 580

Fax: 01278 445 951

southwest.depot@afi-uplift.co.uk

Southampton

Tel: 08701 126 833

Fax: 08701 126 844

southampton.depot@afi-uplift.co.uk

Wakefield

Tel: 01924 224 380

Fax: 01924 891 032

wakefield.depot@afi-uplift.co.uk

WAKEFIELD DEPOT RELOCATION

See the article on Page 6 about the Wakefield depot's relocation to new premises.

AFI DIGITAL PEN SYSTEM ROLL OUT

As Aerial View went to press, we were due to be completing the roll out of our digital pen system throughout the AFI depot network.

A camera in the pen records the engineers' handwriting as they complete forms such as Pre Delivery Inspections, LOLERs and test certificates. The pen then transmits the information into our computer systems as soon as the form is completed.

All reports produced with the pen are in a PDF format so that any information can be sent to our customers within just a few minutes of the engineer completing the paperwork.



ABOVE: Using the digital pen. **BELOW:** The information is transmitted onto our computer systems.



AFI'S WAKEFIELD DEPOT RELOCATES TO LARGER, PURPOSE-BUILT PREMISES

AFI has relocated its Wakefield depot to larger premises.

The new depot – in Pope Street at the heart of Wakefield Europort in Normanton – is twice the size of our previous depot on the Flanshaw Way Industrial Estate.

The new, purpose-built premises have over 13,000 sq ft of workshop space, and 16,000 sq ft of office space, including two fully equipped training areas. Operating with 14 staff, the depot has a fleet of over 360 boom and scissor lifts.

AFI Director Nick Higgins said: "Following the expansion of our rental fleet at Wakefield we

outgrew our former premises. Our move to the new depot gives us the capacity to cater for both recent and future increases in customer demand. This kind of investment in the infrastructure of our business can only improve the level of service that we offer our customers."

"Wakefield has always been one of our high performing depots and, despite the challenging trading climate, there is no reason why that should not continue to be the case," he added.

Wakefield Depot: 01924 224 380
wakefield.depot@afi-uplift.co.uk

NEW SHEET AND PIPE STAND OPTIONS

AFI is offering new sheet stand and pipe stand options for a number of our scissor lift ranges, providing our customers with a much safer and faster method of handling materials.



AFI SHEET STAND

Developed in response to customer demand, the AFI Sheet Stand provides increased safety and reduced manual handling for contractors working with sheet materials and cladding panels.

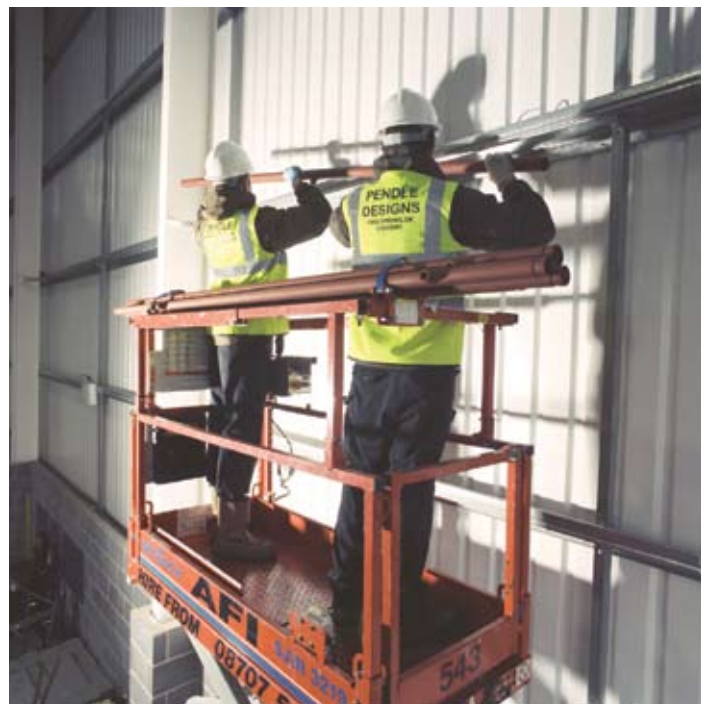
The Sheet Stand incorporates a set of stands which are secured to the working platform to enable sheet materials to be safely loaded, stowed and carried into position. It is available on three scissor lift ranges within the AFI hire fleet – the Skyjack SJ8831, 8841 and 9250 machines.

AFI developed the Sheet Stand after they were approached by one of their major customers, CA Roofing Services. The company's Operations Manager Peter Rowe said: "Health and Safety is a key consideration for

CA Roofing Services and we wanted to remove any temptation for employees to consider resting cladding panels on the guard rails of access units. With the stand in place, the cladding panels are safely secured and there is minimal risk of uneven loading or slippage. We are currently using 12 AFI machines incorporating the Sheet Stand," he added.

Designed to offer storage and work areas for multi-packs or single sheets of cladding panels, the AFI Sheet Stand is CE approved. The scissor lift can be driven whilst elevated with the cladding sheets loaded.

With the Sheet Stand in place, the AFI Skyjack models provide a safe working load of 623kg.



AFI PIPE STAND

The new Pipe Stand accessory can be easily fitted to over 1,500 scissor lifts in the AFI fleet. Designed primarily for smaller installations, the Pipe Stand can be fitted in minutes and used without any modifications being required to the scissor lift. It fits most Skyjack electric scissor lifts between 19ft and 32ft.

TRAINING COURSES AVAILABLE

Here are some examples of the many courses we can offer you through AFI Training:

IPAF Operator

Based on IPAF's Operator Safety Guide and all relevant national and international safety standards, these courses cover Mobile Elevating Work Platforms (MEWPs) such as Mobile Vertical (scissors), Mobile Booms (self propelled booms), Static Booms (trailers, trucks).

IPAF Harness

Approved by the Major Contractors Group (MCG) this course covers the safe and appropriate use of harnesses.

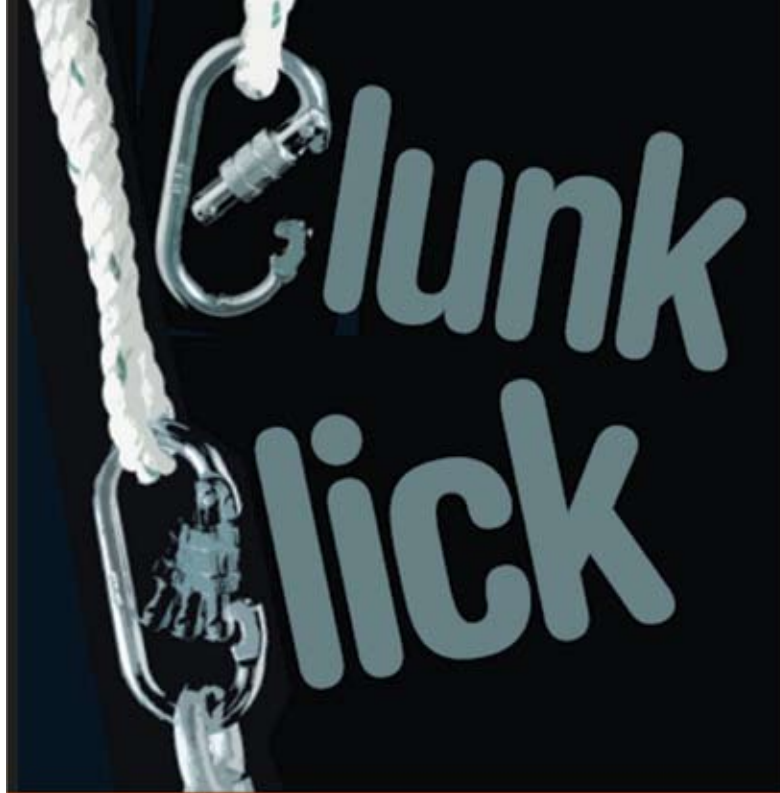
IPAF Safe Loading/Unloading

This course covers the correct safety procedures for the transport of access and plant machinery to obtain an IPAF transportation licence involving loading/unloading and securing.

PASMA Mobile Access Tower Training

The PASMA training is a one day course. Upon successful completion, candidates are issued with a PASMA identity card and certificate which is accepted and recognised by the Health and Safety Executive (HSE) and is valid for a period of five years.

We also offer our own recognised versions of these courses.



Wear a full body harness
with a short lanyard
in boom type platforms

To find out more about the correct use of harnesses in boom type platforms and the wide range of training courses offered by AFI call:

08707 871511

or email: training@afi-uplift.co.uk



BIRMINGHAM ...	Tel: 0121 525 7226
EAST MIDLANDS ...	Tel: 0115 975 3064
HULL ...	Tel: 01482 341 799
LIVERPOOL ...	Tel: 0151 545 2190
LONDON EAST ...	Tel: 01277 812 976
LONDON SOUTH ...	Tel: 01732 781 034
LONDON WEST ...	Tel: 01753 783 744
MANCHESTER ...	Tel: 0161 707 7895
MILTON KEYNES ...	Tel: 01908 670 237
NORTH EAST ...	Tel: 0191 419 0757
PETERBOROUGH ...	Tel: 01733 206 638
PRESTON ...	Tel: 01772 709 731
SCOTLAND ...	Tel: 01698 844 655
SOUTHAMPTON ...	Tel: 08701 126 833
SOUTH WEST ...	Tel: 01278 446 580
SOUTH WALES ...	Tel: 01656 767 456
WAKEFIELD ...	Tel: 01924 224 380