

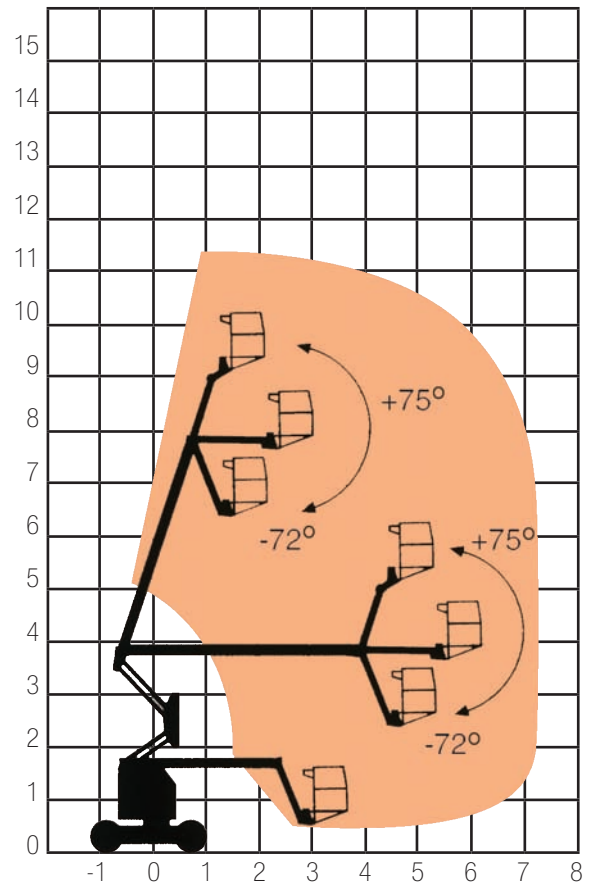
# BOOMS Articulating

## BA30NE

## 10 - 12m

### SPECIFICATION

<b>Reach Height</b>	10.89m
<b>Platform Height</b>	8.89m
<b>Horizontal Outreach</b>	6.25m
<b>Length (unextended)</b>	5.31m
<b>Closed Height (stowed)</b>	2.00m
<b>Width</b>	1.19m
<b>Turning Radius</b>	3.20m
<b>Rotation</b>	355°
<b>Cage Dimensions</b>	0.76 x 1.22m
<b>Lifting Capacity</b>	227kg
<b>Weight</b>	6,450kg
<b>Power</b>	Electric
<b>Model Featured</b>	Genie Z30/20NJ



NATIONAL HIRE LINE

# 08707 511005

[www.afi-uplift.co.uk](http://www.afi-uplift.co.uk)

OTHER MODELS AVAILABLE