

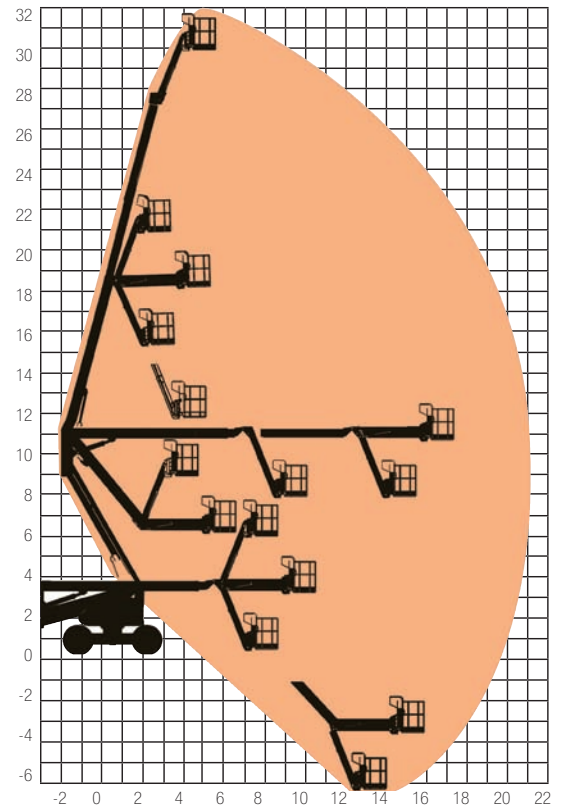
# BOOMS Articulating

## BA104D

## 25 - 32m

### SPECIFICATION

|                               |                 |
|-------------------------------|-----------------|
| <b>Reach Height</b>           | 32.00m          |
| <b>Platform Height</b>        | 30.00m          |
| <b>Horizontal Outreach</b>    | 21.30m          |
| <b>Length (unextended)</b>    | 11.20m          |
| <b>Closed Height (stowed)</b> | 2.70m           |
| <b>Width</b>                  | 3.30m           |
| <b>Turning Radius</b>         | N/A             |
| <b>Rotation</b>               | 360°            |
| <b>Cage Dimensions</b>        | 0.80 x 2.44m    |
| <b>Lifting Capacity</b>       | 250kg           |
| <b>Weight</b>                 | 20,900kg        |
| <b>Power</b>                  | Diesel          |
| <b>Model Featured</b>         | Haulotte HA32PX |



NATIONAL HIRE LINE

# 08707 511005

[www.afi-uplift.co.uk](http://www.afi-uplift.co.uk)

OTHER MODELS AVAILABLE