

# Telehandlers

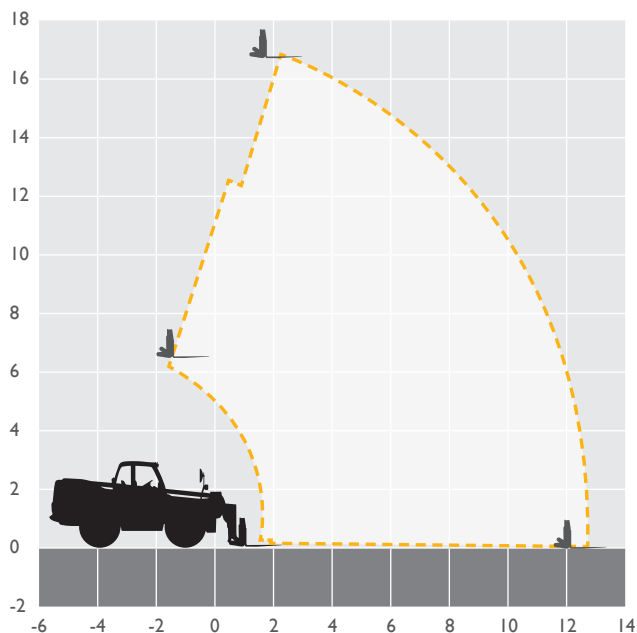


## MACHINE SPECIFICATION SHEET

### TH170 Stabilisers extended **16.70m**

MAX LIFT HEIGHT	16.70m	OVERALL HEIGHT	2.69m
MAX FORWARD REACH	12.50m	GROUND CLEARANCE	0.40m
MAX LIFT CAPACITY	4,000kg	WHEELBASE	2.75m
TURNING RADIUS*	4.10m	LIFT CAPACITY FULL HT	2,500kg
LENGTH TO CARRIAGE	6.36m	REACH WITH lt LOAD	10.50m
WEIGHT	12,060kg	OVERALL WIDTH*	2.44m

FEATURED MODEL **JCB LOADALL 540-170**



At AFI-Uplift we have a wide range of modern machines and depots across the UK with our own transport fleet ready to support all your powered access needs.

Our team of skilled professionals will help you select the best access platform for your specific needs, ensure every machine is maintained to the highest standard and delivered to site on time.

- 6,000 machines at 21 depots across the UK
- Working heights ranging from 3.6m to 58.6m
- Fast delivery using our own transport fleet
- 24 hour and 48 hour delivery option

Keeping you in control of your account at the click of a button. View your account in real time, online 24 hours a day, 365 days per year.



**Online, anytime.**  
Simple, easy and convenient.

**For further information  
call 08707 511 005  
visit [afi-uplift.co.uk](http://afi-uplift.co.uk)**

like us on [facebook.com/AFIHire](https://www.facebook.com/AFIHire)

@AFIUplift

follow us on LinkedIn  
[company/afi-group-of-companies](https://www.linkedin.com/company/afi-group-of-companies)

The information provided is for guidance only. It may change at any time in accordance with manufacturer's specification.

\*Over tyres - dependant upon tyre specified



**t** 08707 511 005  
**e** [info@afi-uplift.co.uk](mailto:info@afi-uplift.co.uk)  
**w** [afi-uplift.co.uk](http://afi-uplift.co.uk)

**AFI**  
group of companies

**Hire | Sales | Training | Safety**