

Telehandlers

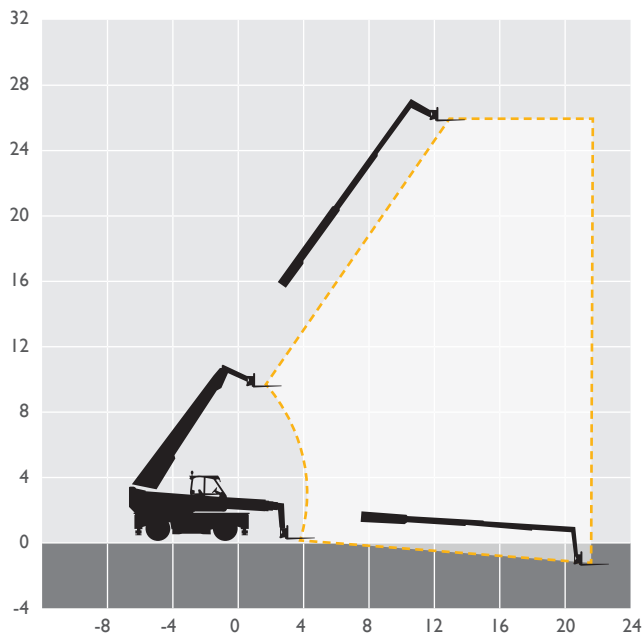


MACHINE SPECIFICATION SHEET

TH260R 26.00m

MAX LIFT HEIGHT	26.00m	OVERALL HEIGHT	2.95m
MAX FORWARD REACH	22.90m	GROUND CLEARANCE	0.33m
MAX LIFT CAPACITY	4,000kg	WHEELBASE	2.99m
TURNING RADIUS*	4.05m	LIFT CAPACITY FULL HT	1,500kg
LENGTH TO CARRIAGE	6.98m	REACH WITH Lt LOAD	13.60m
WEIGHT	16,050kg	OVERALL WIDTH*	2.40m

FEATURED MODEL MERLO ROTO 40.26 MCSS



At AFI-Uplift we have a wide range of modern machines and depots across the UK with our own transport fleet ready to support all your powered access needs.

Our team of skilled professionals will help you select the best access platform for your specific needs, ensure every machine is maintained to the highest standard and delivered to site on time.

- 6,000 machines at 21 depots across the UK
- Working heights ranging from 3.6m to 58.6m
- Fast delivery using our own transport fleet
- 24 hour and 48 hour delivery option

Keeping you in control of your account at the click of a button. View your account in real time, online 24 hours a day, 365 days per year.



Online, anytime.
Simple, easy and convenient.

**For further information
call 08707 511 005
visit afi-uplift.co.uk**

like us on facebook.com/AFIHire

@AFIUplift

follow us on LinkedIn
company/afi-group-of-companies

The information provided is for guidance only. It may change at any time in accordance with manufacturer's specification.

*Over tyres - dependant upon tyre specified



t 08707 511 005
e info@afi-uplift.co.uk
w afi-uplift.co.uk

AFI
group of companies

Hire | Sales | Training | Safety