

Telehandlers

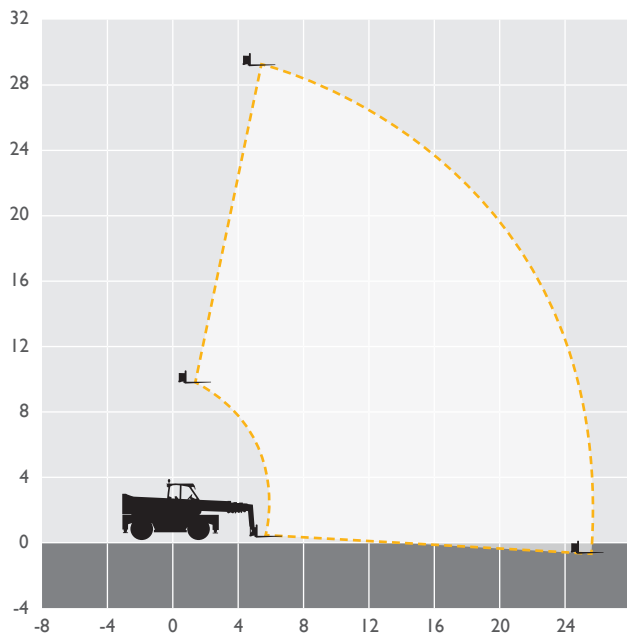


MACHINE SPECIFICATION SHEET

TH300R 29.50m

MAX LIFT HEIGHT	29.50m	OVERALL HEIGHT	3.10m
MAX FORWARD REACH	25.50m	GROUND CLEARANCE	0.38m
MAX LIFT CAPACITY	4,000kg	WHEELBASE	3.20m
TURNING RADIUS*	4.45m	LIFT CAPACITY FULL HT	1,500kg
LENGTH TO CARRIAGE	7.56m	REACH WITH lt LOAD	19.40m
WEIGHT	19,200kg	OVERALL WIDTH*	2.49m

FEATURED MODEL MERLO ROTO 40.30 MCSS



At AFI-Uplift we have a wide range of modern machines and depots across the UK with our own transport fleet ready to support all your powered access needs.

Our team of skilled professionals will help you select the best access platform for your specific needs, ensure every machine is maintained to the highest standard and delivered to site on time.

- 6,000 machines at 21 depots across the UK
- Working heights ranging from 3.6m to 58.6m
- Fast delivery using our own transport fleet
- 24 hour and 48 hour delivery option

Keeping you in control of your account at the click of a button. View your account in real time, online 24 hours a day, 365 days per year.



Online, anytime.
Simple, easy and convenient.

**For further information
call 08707 511 005
visit afi-uplift.co.uk**

like us on [facebook.com/AFIHire](https://www.facebook.com/AFIHire)

@AFIUplift

follow us on LinkedIn
[company/afi-group-of-companies](https://www.linkedin.com/company/afi-group-of-companies)

The information provided is for guidance only.
It may change at any time in accordance with
manufacturer's specification.

*Over tyres - dependant upon tyre specified



t 08707 511 005
e info@afi-uplift.co.uk
w afi-uplift.co.uk

AFI
group of companies

Hire | Sales | Training | Safety